

A

press the octave key with the left thumb

G

F

Looking Down

CD #1 Tracks 1 (♩=104), 21 (♩=92), 42 (solos)
Intro: 4 measures (no repeats or intros on solos)

The tenor sax is a **transposing instrument** in $B\flat$. That means that the note C on the tenor sax is really a $B\flat$ on the piano. That's why your notes are not the same as instruments like flutes and trombones, which are **concert pitch** or **non-transposing instruments**.

Notice the repeat sign
(go back to the beginning and play the line again)

Looking Up

CD #1 Tracks 2 (♩=104), 22 (♩=92), 42 (solos)
Intro: 4 measures (no repeats or intros on solos)

Try for Three

CD #1 Tracks 3 (♩=104), 23 (♩=96), 43 (solos)
Intro: 2 measures (no repeats or intros on solos)

This song starts with a *mi re do* pattern. A song is in the **Key of F** when do is F.

A key signature indicates which notes are flat or sharp throughout a piece. Our first songs are all in the **Key of F**, which has one flat. This flat refers to $B\flat$, a note we will learn in Lesson 4.

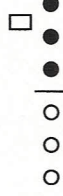
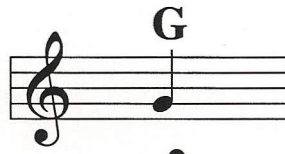
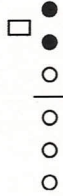
Good to be Home

CD #1 Tracks 4 (♩=92), 24 (♩=80), 44 (solos)
Intro: 2 measures (no repeats or intros on solos)

In the **Key of F**, the note F feels like "home".



the octave key
is *not* pressed for
this low version



Looking Down

CD #1 Tracks 1 (♩=104), 21 (♩=92), 42 (solos)
Intro: 4 measures (no repeats or intros on solos)

The tenor sax is a **transposing instrument** in $B\flat$. That means that the note C on the tenor sax is really a $B\flat$ on the piano. That's why your notes are not the same as instruments like flutes and trombones, which are **concert pitch** or **non-transposing instruments**.



Notice the **repeat sign**
(go back to the beginning
and play the line again)

Looking Up

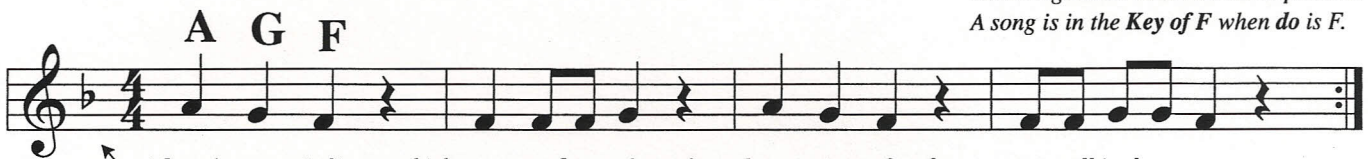
CD #1 Tracks 2 (♩=104), 22 (♩=92), 42 (solos)
Intro: 4 measures (no repeats or intros on solos)



Try for Three

CD #1 Tracks 3 (♩=104), 23 (♩=96), 43 (solos)
Intro: 2 measures (no repeats or intros on solos)

This song starts with a **mi re do** pattern.
A song is in the **Key of F** when do is F.



A **key signature** indicates which notes are flat or sharp throughout a piece. Our first songs are all in the **Key of F**, which has one flat. This flat refers to $B\flat$, a note we will learn in Lesson 4.

Good to be Home

CD #1 Tracks 4 (♩=92), 24 (♩=80), 44 (solos)
Intro: 2 measures (no repeats or intros on solos)

In the **Key of F**, the note F feels like "home".

