

# STAFF LESSON: DRAW A STAFF

Name: \_\_\_\_\_ Grade: \_\_\_\_\_

**To do:** Draw lines between the dots to make a five line staff. Make sure to draw a line through the dots at the end to make it a musical staff!

5 ●



4 ●



3 ●



2 ●



1 ●



**To do:** Draw lines between the dots to make a five line staff. Number the lines from low to high.

— ●



— ●



— ●



— ●



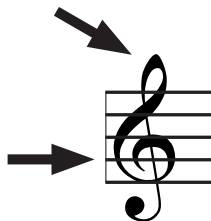
— ●



# STAFF LESSON: THE TREBLE CLEF

Name: \_\_\_\_\_ Grade: \_\_\_\_\_

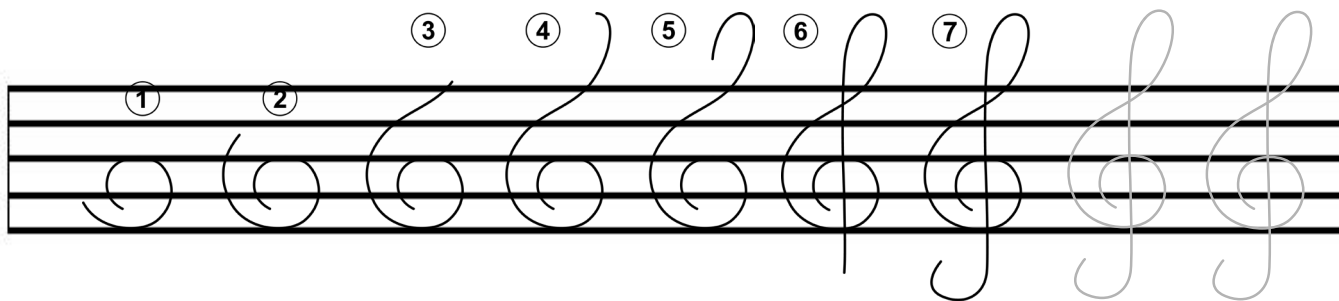
A clef is given as the beginning of each staff. The treble clef circles the note G.



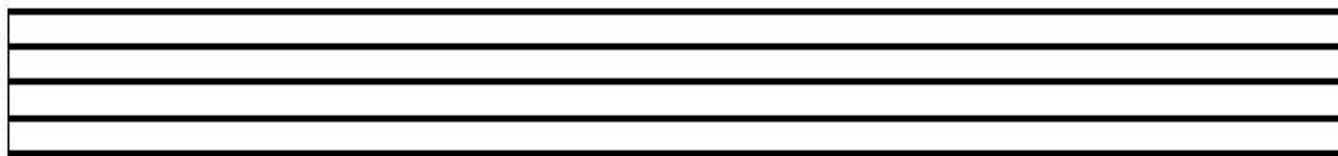
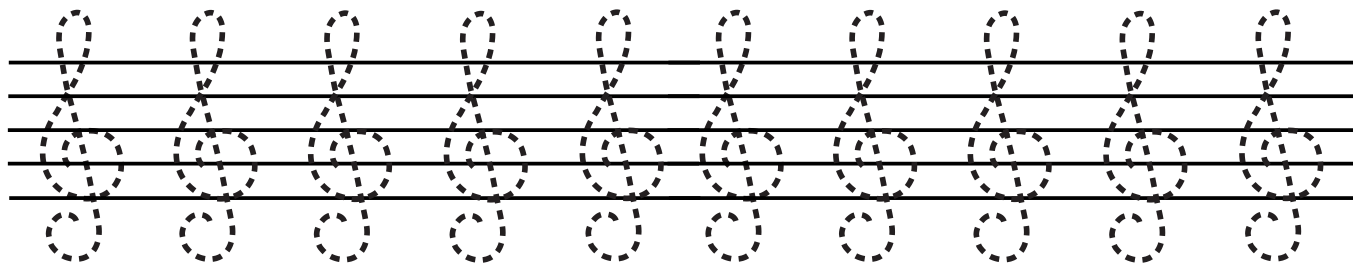
Drawing a treble clef is fun!

**To do:** On the staff below, follow the steps to draw your own clef! Don't forget to trace the last two clefs on the first staff!

Trace the last two!



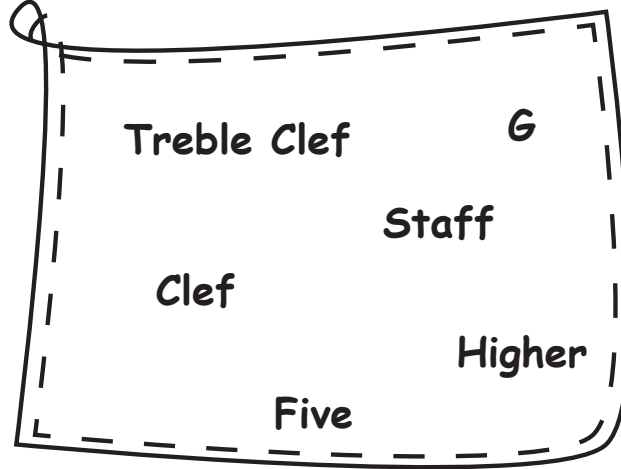
**To do:** On the staff below, trace the treble clefs provided, then try drawing five of your own using the steps above.



# STAFF LESSON: FILL IN THE BLANKS

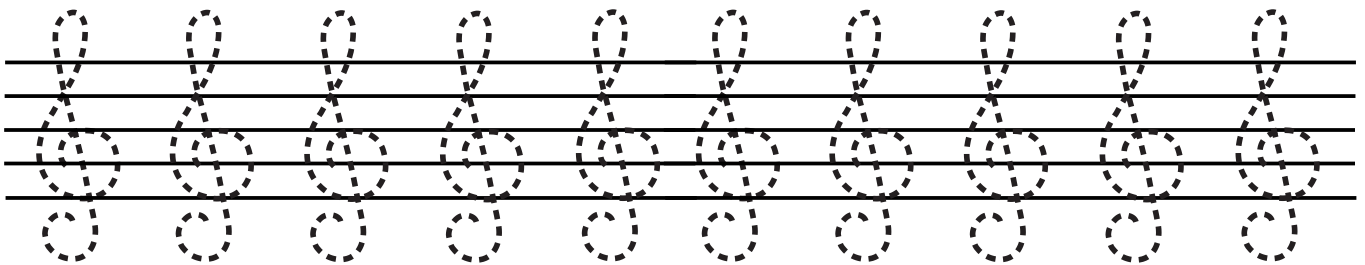
Name: \_\_\_\_\_ Grade: \_\_\_\_\_

To do: Choose the right word from the shape below to fill in the answers.



1. Music is written on a \_\_\_\_\_.
2. A \_\_\_\_\_ has \_\_\_\_\_ lines.
3. A \_\_\_\_\_ is given at the beginning of each \_\_\_\_\_.
4. The treble clef circles the note \_\_\_\_\_.
5. The \_\_\_\_\_ is used for \_\_\_\_\_ notes.

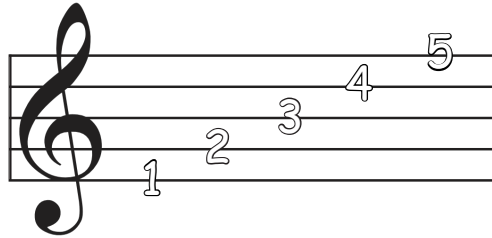
Let's Practice Some More!



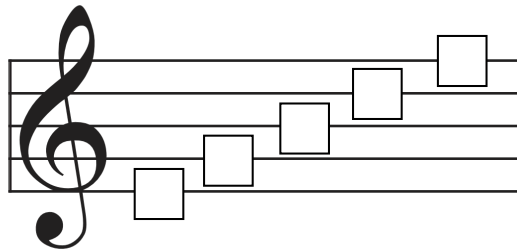
# STAFF LESSON: LINES ON A STAFF

Name: \_\_\_\_\_ Grade: \_\_\_\_\_

The lines are numbered from the bottom to the top.



To do: Write the correct line number for each line.



To do: Name the correct line the note is on.

Line \_\_

Line \_\_

Line \_\_

Line \_\_

Line \_\_

Line \_\_

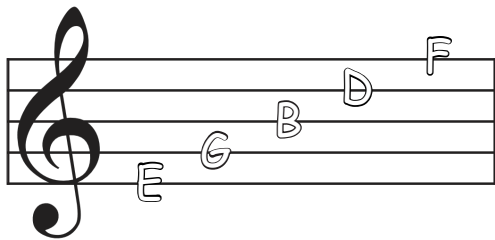
Line \_\_

Line \_\_

# STAFF LESSON: NAME THE NOTES ON THE LINES

Name: \_\_\_\_\_ Grade: \_\_\_\_\_

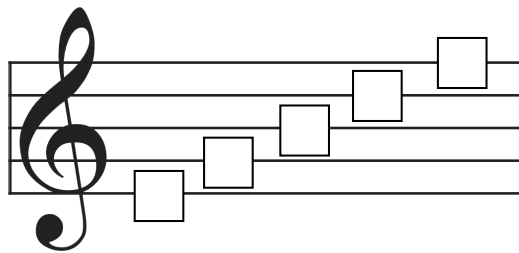
The notes on the lines are E, G, B, D, F.  
You can remember the notes on the lines with this saying:  
**Every Good Boy Deserves Fudge**



Can you make up your own saying?

E \_\_\_\_\_  
G \_\_\_\_\_  
B \_\_\_\_\_  
D \_\_\_\_\_  
F \_\_\_\_\_

To do: Write the correct note name for each line.



To do: Name the correct note on the line.

\_\_\_\_\_

\_\_\_\_\_

\_\_\_\_\_

\_\_\_\_\_

\_\_\_\_\_

\_\_\_\_\_

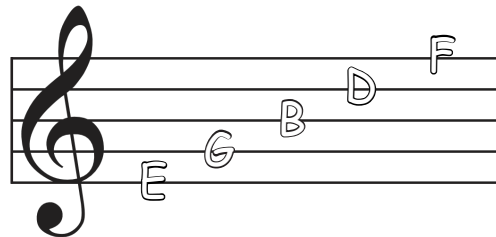
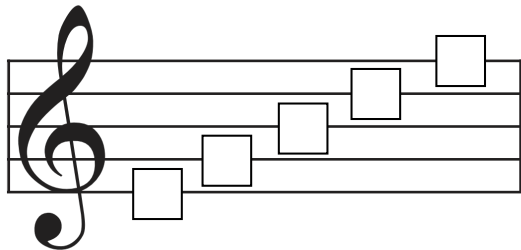
\_\_\_\_\_

\_\_\_\_\_

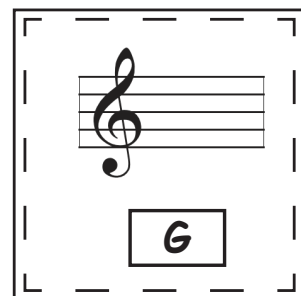
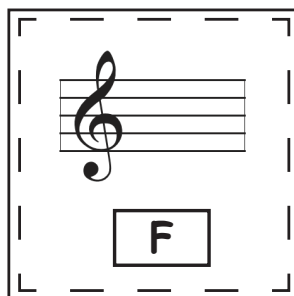
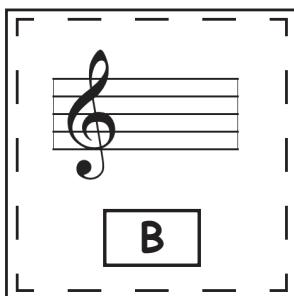
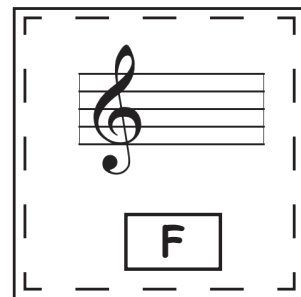
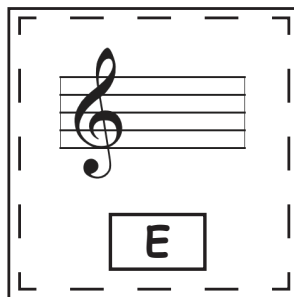
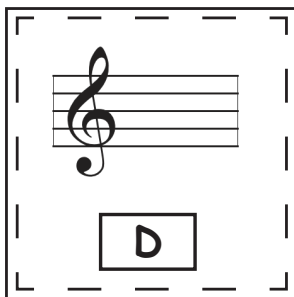
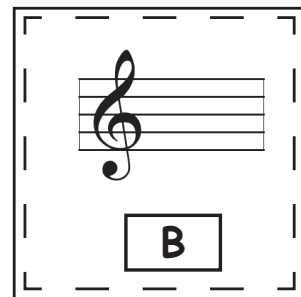
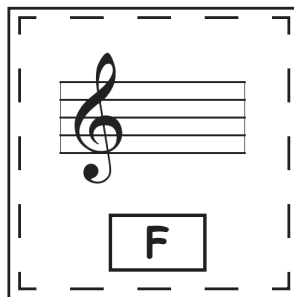
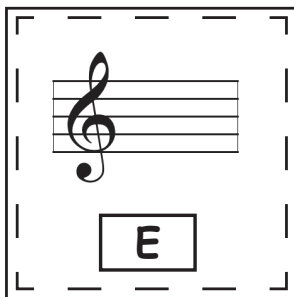
# STAFF LESSON: DRAW THE NOTES ON THE LINES

Name: \_\_\_\_\_ Grade: \_\_\_\_\_

To do: Name the note on each line



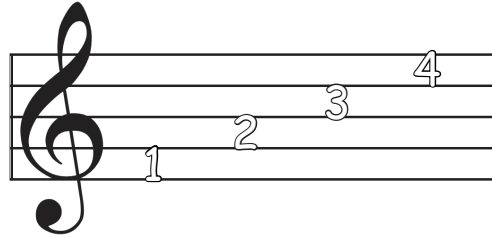
To do: Draw the note on the correct line.



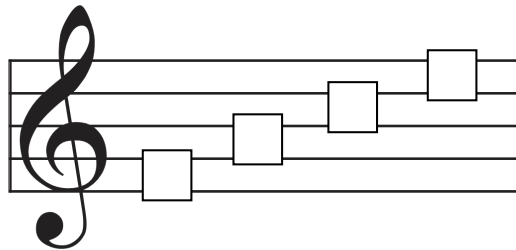
# STAFF LESSON: SPACES ON A STAFF

Name: \_\_\_\_\_ Grade: \_\_\_\_\_

The spaces are numbered from the bottom to the top.



To do: Write the correct number for each space.



To do: Name the correct space the note is in.

Space \_\_

Space \_\_

Space \_\_

Space \_\_

Space \_\_

Space \_\_

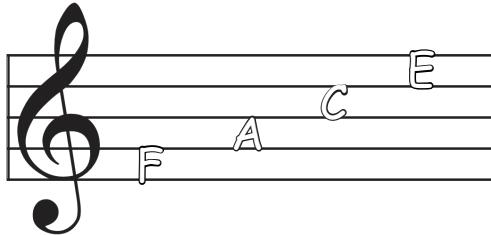
Space \_\_

Space \_\_

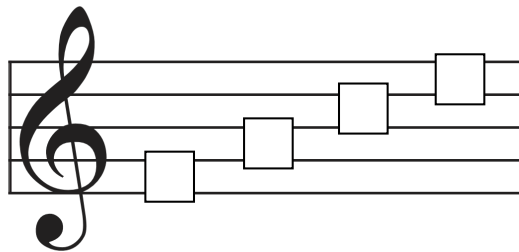
# STAFF LESSON: NAME THE NOTES IN THE SPACES

Name: \_\_\_\_\_ Grade: \_\_\_\_\_

The notes on the lines are F, A, C, E. Use this poem to help you remember the names of the notes in spaces: The notes in the space, spell your FACE.



To do: Write the correct note name for each space.



To do: Name the correct note on the space.

A musical staff with a treble clef. A single note is placed on the first space (F). Below the staff is a dashed rectangular box for writing the note name.

\_\_\_\_\_

A musical staff with a treble clef. A single note is placed on the second space (A). Below the staff is a dashed rectangular box for writing the note name.

\_\_\_\_\_

A musical staff with a treble clef. A single note is placed on the third space (C). Below the staff is a dashed rectangular box for writing the note name.

\_\_\_\_\_

A musical staff with a treble clef. A single note is placed on the fourth space (E). Below the staff is a dashed rectangular box for writing the note name.

\_\_\_\_\_

A musical staff with a treble clef. A single note is placed on the first space (F). Below the staff is a dashed rectangular box for writing the note name.

\_\_\_\_\_

A musical staff with a treble clef. A single note is placed on the second space (A). Below the staff is a dashed rectangular box for writing the note name.

\_\_\_\_\_

A musical staff with a treble clef. A single note is placed on the third space (C). Below the staff is a dashed rectangular box for writing the note name.

\_\_\_\_\_

A musical staff with a treble clef. A single note is placed on the fourth space (E). Below the staff is a dashed rectangular box for writing the note name.

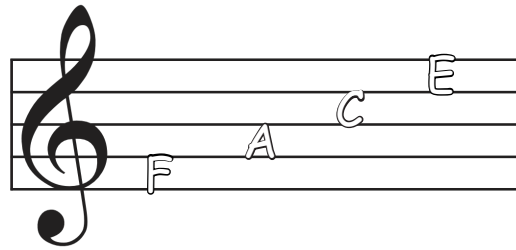
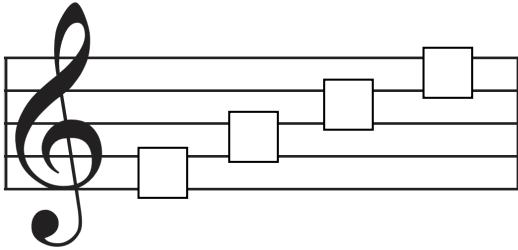
\_\_\_\_\_



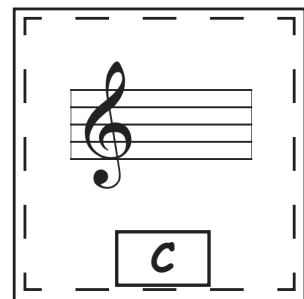
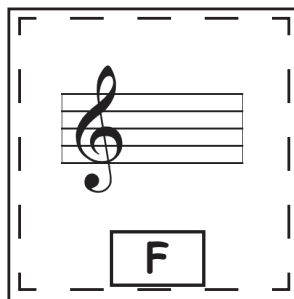
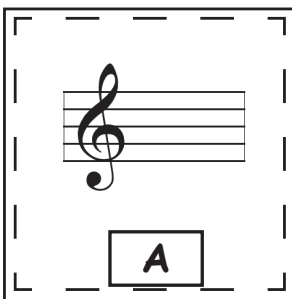
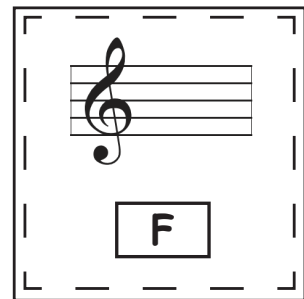
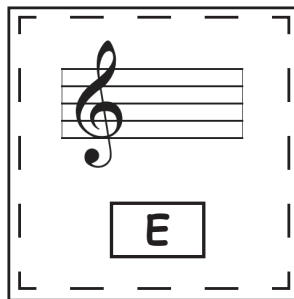
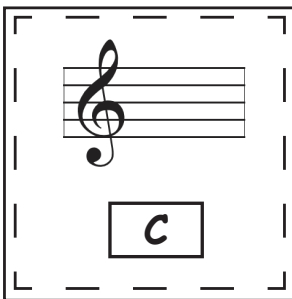
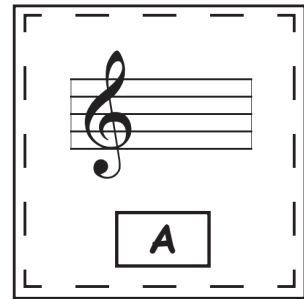
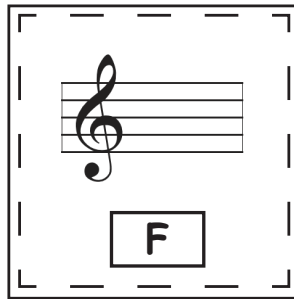
# STAFF LESSON: DRAW THE NOTES IN THE SPACES

Name: \_\_\_\_\_ Grade: \_\_\_\_\_

To do: Name the notes in each space.



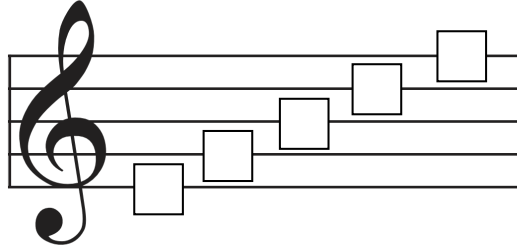
To do: Draw the note in the correct space.



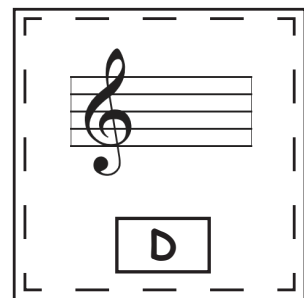
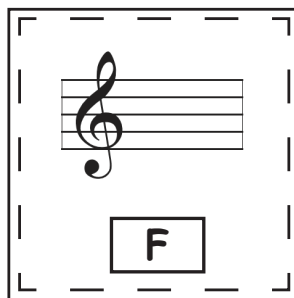
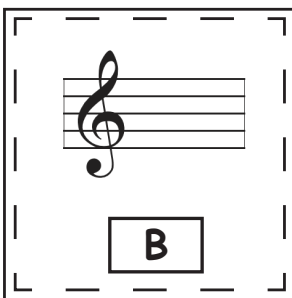
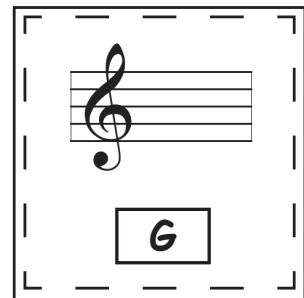
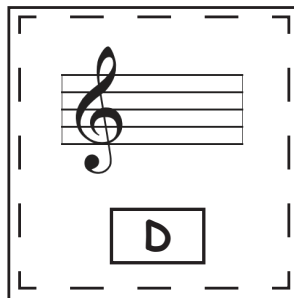
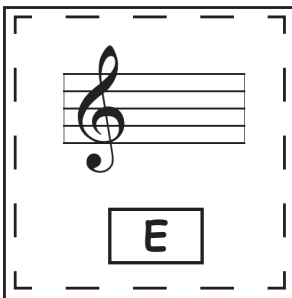
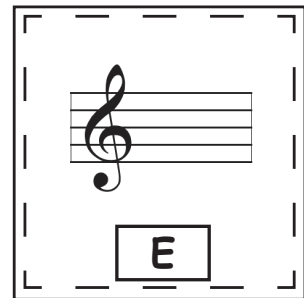
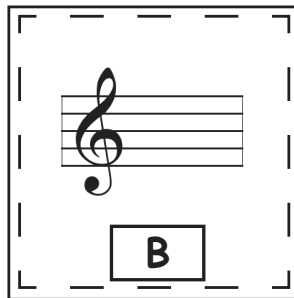
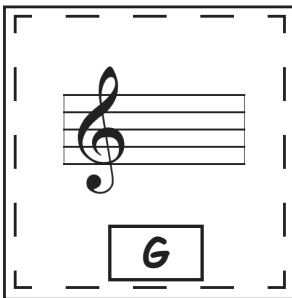
# MORE PRACTICE: NOTES ON THE LINES

Name: \_\_\_\_\_ Grade: \_\_\_\_\_

To do: Write the correct note name for each line.



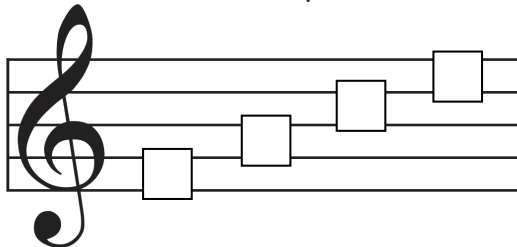
To do: Draw the note on the correct line.



# MORE PRACTICE: NOTES IN THE SPACES

Name: \_\_\_\_\_ Grade: \_\_\_\_\_

To do: Write the correct note name for each space.



To do: Draw the note in the correct space

F

A

C

C

A

F

E

C

A

# MORE PRACTICE: NAME THE NOTES ON THE STAFF

Name: \_\_\_\_\_ Grade: \_\_\_\_\_

To do: Name the notes on the staff.

\_\_\_\_\_

\_\_\_\_\_

\_\_\_\_\_

\_\_\_\_\_

\_\_\_\_\_

\_\_\_\_\_

\_\_\_\_\_

\_\_\_\_\_

\_\_\_\_\_

\_\_\_\_\_

\_\_\_\_\_

\_\_\_\_\_

\_\_\_\_\_

\_\_\_\_\_

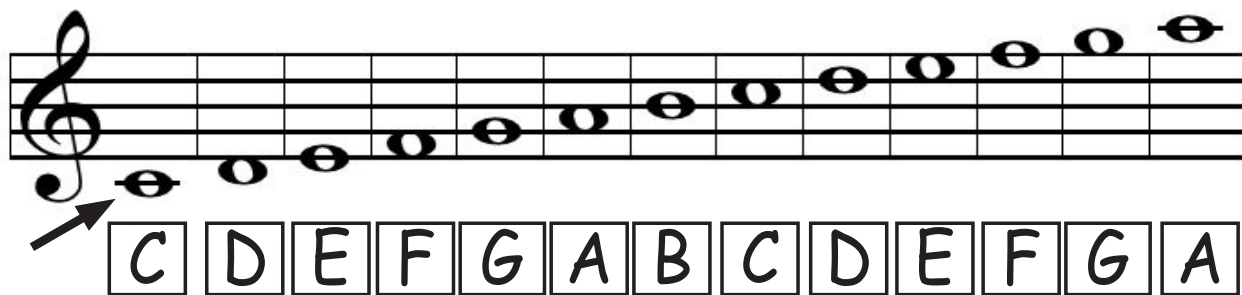
\_\_\_\_\_

\_\_\_\_\_

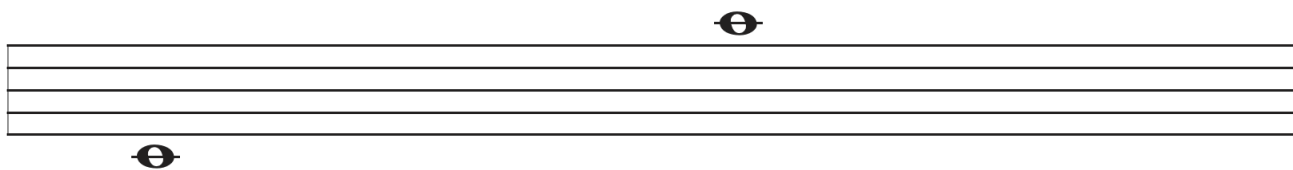
# STAFF LESSON: LEDGER LINES

Name: \_\_\_\_\_ Grade: \_\_\_\_\_

Notes that are too high or too low to fit on the staff use ledger lines.



To do: Draw a treble clef and practice writing notes with ledger lines (C and A).



To do: Name the notes on the staff.

