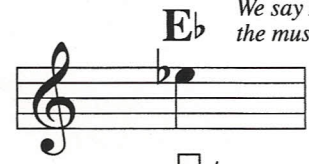


use the **right** half of the thumb key



most notes on the flute have this key pressed with the right hand little finger



notice the left hand first finger is off for this note

We say E flat, but the music says flat E.

Looking Down

CD #1 Tracks 1 (♩=104), 21 (♩=92), 42 (solos)
Intro: 4 measures (no repeats or intros on solos)



This is a new measure, so we have to use a flat sign the first time the note Eb happens.

The flat sign on the first note applies not only to that note, but every time that note comes in the same measure. All the notes in this measure are Eb.

Notice the repeat sign (go back to the beginning and play the line again)

Looking Up

CD #1 Tracks 2 (♩=104), 22 (♩=92), 42 (solos)
Intro: 4 measures (no repeats or intros on solos)



Try for Three

CD #1 Tracks 3 (♩=104), 23 (♩=96), 43 (solos)
Intro: 2 measures (no repeats or intros on solos)

This song starts with a *mi re do* pattern. A song is in the Key of Eb when do is Eb



A key signature indicates which notes are flat or sharp throughout a piece. Our first songs are all in the Key of Eb, which has three flats. The second flat is Eb, and means that all E's are automatically flat in this line, without putting a flat sign in front of each note. The other flats apply to notes we will learn later.

Good to be Home

CD #1 Tracks 4 (♩=92), 24 (♩=80), 44 (solos)
Intro: 2 measures (no repeats or intros on solos)

In the Key of Eb, the note Eb feels like "home".

