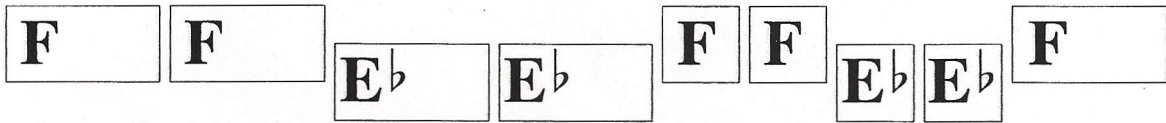


Looking Down

Notes used:



CD #1 Tracks 1 (faster), 21 (slower), 42 (solos)
Intro: 4 measures (no repeats or intros on solos)



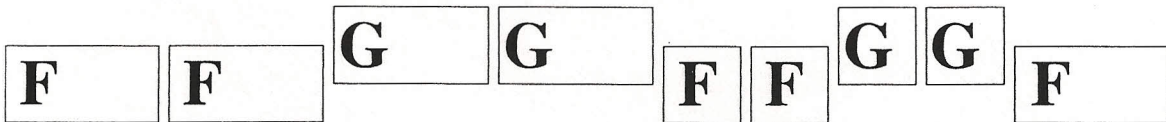
Repeat

Looking Up

Notes used:



CD #1 Tracks 2 (faster), 22 (slower), 42 (solos)
Intro: 4 measures (no repeats or intros on solos)



Repeat

C Instruments* - Key of E \flat

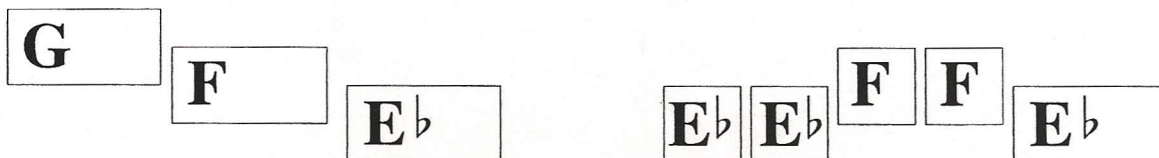
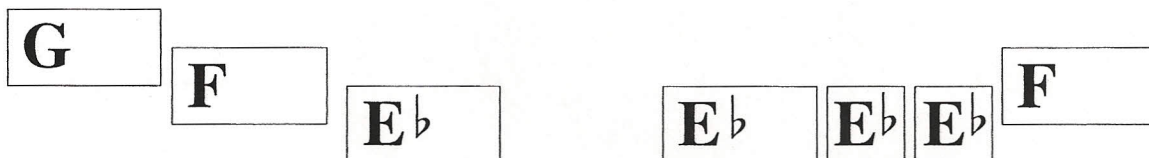
Try for Three

CD #1 - Tracks 3 (faster), 23 (slower), 43 (solos)

Intro: 2 measures (no repeats or intros on solos)

This song starts with a mi re do pattern.

A song is in the Key of E \flat when do is E \flat .

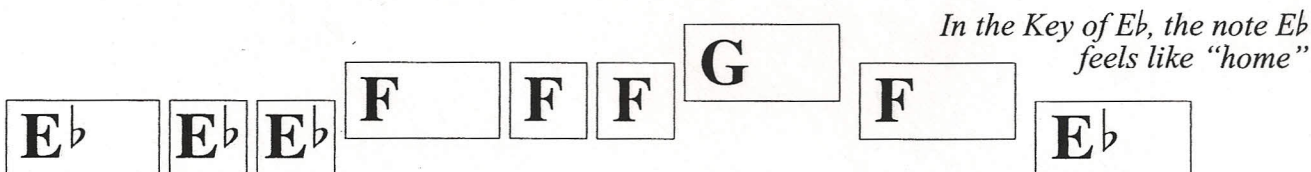


Repeat

Good to be Home

CD #1 - Tracks 4 (faster), 24 (slower), 44 (solos)

Intro: 2 measures (no repeats or intros on solos)



Repeat

* a C Instrument is one where the note C on the instrument is the same as a C on the piano.

Instruments whose notes are the same as the piano are called *concert pitch* or *non-transposing instruments*.